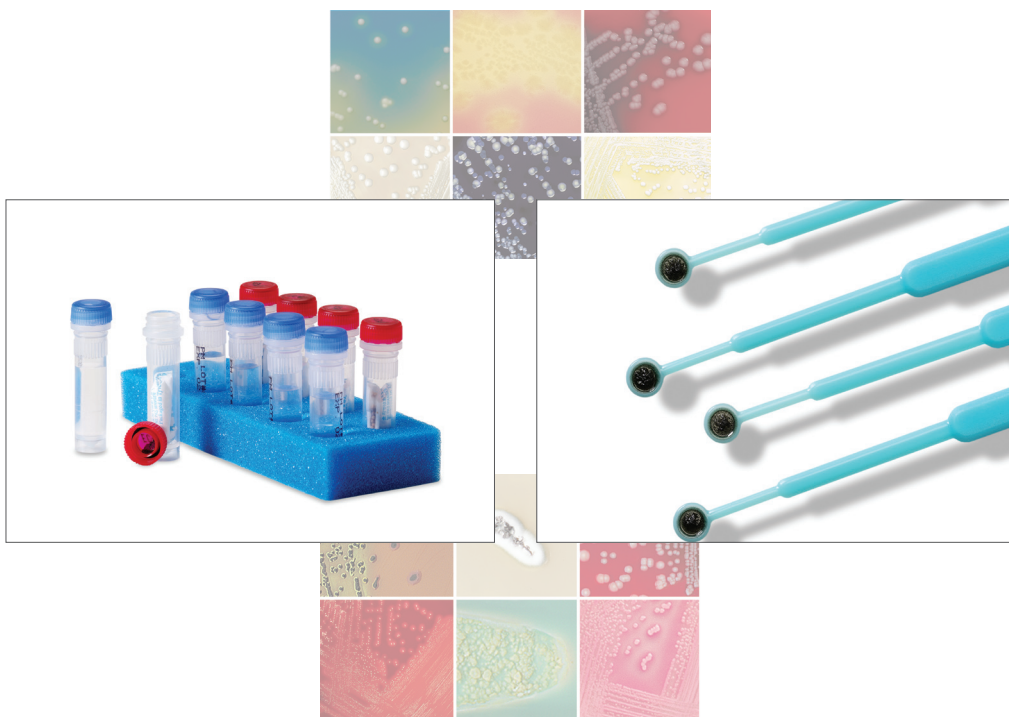


Quality Control Organisms

2019~20 Mini Catalog



Quanti-Cult Plus™

정량적 품질관리미생물

안전

오염과 감염 위험의 감소

신뢰

ATCC® 라이선스 균주

ATCC Licensed
Derivative

가치

고품질의 배지와 품질 관리 미생물을
함께 공급하는 하나의 공급업체

성능

향상된 생존성과 회수율

효율

떼어내서 다른 곳에 부착가능한 라벨



2-vial system

밀봉을 위한
검정색 O링

미생물이
보존된 젤

재수화 용액



뚜껑이동



혼합 및 배양



접종



- 개별 포장된 10개의 균주 파우치와 10개의 재수화 용액 제공*
- 1바이알당 약 1.1ml의 재구성후 부피가 준비되며 0.1ml 접종부피를 10회 사용하면 제품당 총 100회 시험 용량을 제공
- 0.1ml당 <100 CFU의 접종량
- 단일 미생물 제품, 세트 구성 제품, 수질관리 세트 제품 등 다양한 세트 제품도 제공

* 세트 구성품 등 일부 제품의 경우 구성 수량이 다를 수 있습니다

한글 제품 설명서



편리

직접 도말 관련 시간과 비용 감소

안전

오염과 감염 위험의 감소

신뢰

ATCC® 라이선스 균주



가치

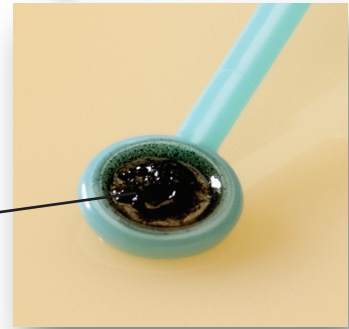
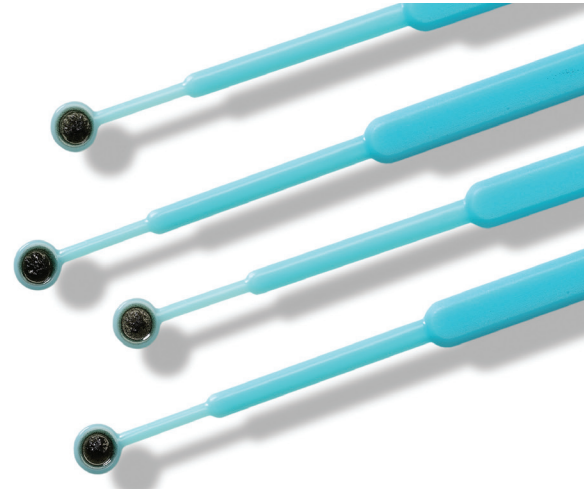
고품질의 배지와 품질 관리 미생물을
함께 공급하는 하나의 공급업체

성능

향상된 생존성과 회수율

효율

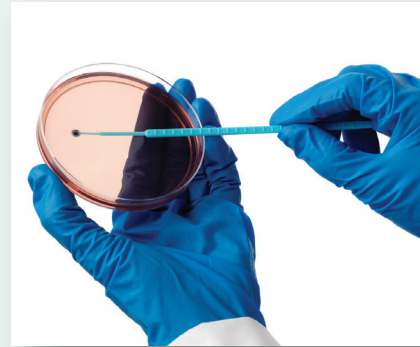
떼어내서 다른 곳에 부착가능한 라벨



미생물이
보존된 젤



개별 포장 개봉



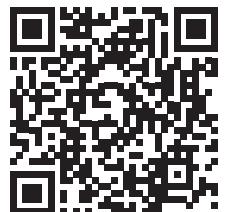
가운 및 접종



- 제품당 5개의 파우치*
- 밀봉 파우치에 1개 루프가 포장됨
- 1개의 루프로 약 5개 plate를 접종
- 500여가지 이상의 단일 미생물을 제공하는 제품과 RapID, Sensititre, MicroScan, Vitek 등의 품질관리를 위한 여러 균주로 구성된 세트 제품도 제공

* 세트 구성품 등 일부 제품의 경우 구성 수량이 다를 수 있습니다

한글 제품 설명서



Quality Control Organism, qualitative

Thermo Scientific™ Culti-Loops™ Quality Control Organisms are available in packs of five. Culti-Loops organisms should be stored at 2–8°C, with the exception of *Campylobacter* spp. which should be kept frozen (-18°C).

Organism	Order Code (5 loops)
A	
Achromobacter xylosoxidans subsp. xylosoxidans ATCC® 27061™*	R4601012
Acinetobacter baumannii ATCC® 19606™*	R4601007
Acinetobacter baumannii ATCC® BAA-747™*	R4601009
Acinetobacter lwoffii ATCC® 17925™*	R4600503
Acinetobacter sp. ATCC® 49137™*	R4601002
Acinetobacter sp. ATCC® 49139™*	R4600501
Acinetobacter sp. ATCC® 49466™*	R4601008
Acinetobacter sp. ATCC® 9957™*	R4609204
Actinomyces odontolyticus ATCC® 17929™*	R4600500
Actinomyces viscosus ATCC® 15987™*	R4600510
Actinomyces viscosus ATCC® 43146™*	R4609459
Aerococcus viridans ATCC® 11563™*	R4601019
Aerococcus viridans ATCC® 700406™*	R4601022
Aeromonas caviae ATCC® 15468™*	R4601021
Aeromonas hydrophila ATCC® 35654™*	R4601013
Aeromonas hydrophila ATCC® 49140™*	R4601003
Aeromonas hydrophila ATCC® 7965™*	R4609350
Aeromonas hydrophila ATCC® 7966™*	R4601020
Aeromonas salmonicida ATCC® 33658™*	R4609456
Aeromonas veronii biogroup sobria ATCC® 9071™*	R4601005
Aggregatibacter aphrophilus ATCC® 33389™*	R4603020
Alcaligenes faecalis ATCC® 35655™*	R4601011
Alcaligenes faecalis subsp. faecalis ATCC® 8750™*	R4601006
Alternaria alternata TX 8025	R4601016
Aneurinibacillus aneurinolyticus ATCC® 11376™*	R4601015
Arcanobacterium haemolyticum ATCC® BAA-1784™*	R4609413
Arcanobacterium pyogenes ATCC® 19411™*	R4600504
Arcanobacterium pyogenes ATCC® 49698™*	R4600502
Aspergillus brasiliensis ATCC® 16404™*	R4601100
Aspergillus brasiliensis ATCC® 9642™*	R4601102
Aspergillus fumigatus KM 8001	R4601018
Aspergillus oryzae ATCC® 10124™*	R4601017
Atopobium vaginae ATCC® BAA-55™*	R4609450
B	
Bacillus badius ATCC® 14574™*	R4609394
Bacillus cereus ATCC® 11778™*	R4601220
Bacillus cereus ATCC® 14579™*	R4601217
Bacillus circulans ATCC® 61™*	R4601216
Bacillus licheniformis ATCC® 12759™*	R4601233
Bacillus megaterium ATCC® 14581™*	R4609395
Bacillus pumilus ATCC® BAA-1434™*	R4609379
Bacillus stearothermophilus ATCC® 10149™*	R4601202
Bacillus subtilis ATCC® 6633™*	R4601221
Bacteroides fragilis ATCC® 23745™*	R4601251
Bacteroides fragilis ATCC® 25285™*	R4601250
Bacteroides ovatus ATCC® 8483™*	R4601222
Bacteroides ovatus ATCC® BAA-1296™*	R4609374
Bacteroides ovatus ATCC® BAA-1304™*	R4609376
Bacteroides thetaiotaomicron ATCC® 29741™*	R4601260
Bacteroides uniformis ATCC® 8492™*	R4601259
Bacteroides ureolyticus ATCC® 33387™*	R4601201
Bacteroides vulgatus ATCC® 8482™*	R4601261
Bifidobacterium breve ATCC® 15700™*	R4606801
Bordetella bronchiseptica ATCC® 10580™*	R4601224
Bordetella bronchiseptica ATCC® 4617™*	R4601223
Bordetella pertussis ATCC® 12742™*	R4609213
Bordetella pertussis ATCC® 9340™*	R4601225
Brevibacillus agri ATCC® 51663™*	R4607217
Brevibacillus laterosporus ATCC® 64™*	R4607228
Brevundimonas diminuta ATCC® 11568™*	R4607219
Brevundimonas diminuta ATCC® 19146™*	R4607200
Brochothrix thermosphacta ATCC® 11509™*	R4609038
Burkholderia cepacia ATCC® 25416™*	R4605220
Burkholderia cepacia ATCC® 25608™*	R4601232

Organism	Order Code (5 loops)
C	
Campylobacter coli ATCC® 33559™*	R4609039
Campylobacter coli ATCC® 43478™*	R4609387
Campylobacter jejuni ATCC® 29428™*	R4601410
Campylobacter jejuni ATCC® BAA-1153™*	R4601440
Campylobacter jejuni subsp. jejuni ATCC® 33291™*	R4601400
Campylobacter jejuni subsp. jejuni ATCC® 33292™*	R4607070
Candida albicans ATCC® 10231™*	R4601503
Candida albicans ATCC® 14053™*	R4601501
Candida albicans ATCC® 2091™*	R4601523
Candida albicans ATCC® 36232™*	R4601239
Candida albicans ATCC® 60193™*	R4601502
Candida albicans ATCC® 66027™*	R4601495
Candida albicans ATCC® 90028™*	R4601496
Candida dubliniensis ATCC® MYA-577™*	R4609463
Candida geochares ATCC® 36852™*	R4601401
Candida glabrata ATCC® 15126™*	R4601513
Candida glabrata ATCC® 2001™*	R4601504
Candida glabrata ATCC® 66032™*	R4601511
Candida glabrata ATCC® MYA-2950™*	R4601505
Candida guilliermondii ATCC® 6260™*	R4601521
Candida kefyr ATCC® 204093™*	R4608013
Candida kefyr ATCC® 2512™*	R4601507
Candida kefyr ATCC® 66028™*	R4601512
Candida krusei ATCC® 14243™*	R4601510
Candida krusei ATCC® 34135™*	R4609464
Candida lusitanae ATCC® 34449™*	R4601243
Candida lusitanae ATCC® 42720™*	R4601506
Candida lusitanae ATCC® 66035™*	R4601516
Candida parapsilosis ATCC® 22019™*	R4601518
Candida parapsilosis ATCC® 34136™*	R4601515
Candida parapsilosis ATCC® 90018™*	R4609458
Candida tropicalis ATCC® 1369™*	R4609465
Candida tropicalis ATCC® 201380™*	R4601244
Candida tropicalis ATCC® 13803™*	R4609240
Candida tropicalis ATCC® 66029™*	R4601517
Candida tropicalis ATCC® 750™*	R4601240
Candida utilis ATCC® 9950™*	R4608012
Cellulosimicrobium cellulans ATCC® 27402™*	R4601544
Citrobacter braakii ATCC® 10625™*	R4601801
Citrobacter diversus KM 11012	R4601508
Citrobacter freundii ATCC® 8090™*	R4601800
Clostridium baratii ATCC® 27638™*	R4601615
Clostridium difficile ATCC® 43255™*	R4601603
Clostridium difficile ATCC® 700057™*	R4609452
Clostridium difficile ATCC® 9689™*	R4601610
Clostridium difficile ATCC® BAA-1870™*	R4609433
Clostridium histolyticum ATCC® 19401™*	R4601601
Clostridium novyi ATCC® 7659™*	R4601605
Clostridium novyi Type A ATCC® 19402™*	R4609220
Clostridium septicum ATCC® 12464™*	R4601650
Clostridium sordellii ATCC® 9714™*	R4601602
Clostridium sporogenes ATCC® 11437™*	R4601703
Clostridium sporogenes ATCC® 19404™*	R4601700
Clostridium sporogenes ATCC® 3584™*	R4601701
Clostridium tertium ATCC® 19405™*	R4601509
Corynebacterium diphtheriae ATCC® 13812™*	R4609234
Corynebacterium jeikeium ATCC® 43734™*	R4601901
Corynebacterium minutissimum ATCC® 23348™*	R4601904
Corynebacterium pseudodiphtheriticum ATCC® 10700™*	R4601902
Corynebacterium pseudodiphtheriticum ATCC® 10701™*	R4601903
Corynebacterium renale ATCC® 19412™*	R4601906
Corynebacterium renale ATCC® BAA-1785™*	R4609415
Corynebacterium striatum ATCC® BAA-1293™*	R4609308
Corynebacterium urealyticum ATCC® 43044™*	R4609414
Corynebacterium xerosis ATCC® 373™*	R4601905
Cronobacter mutytjensii ATCC® 51329™*	R4607093
Cryptococcus albidus ATCC® 66030™*	R4601710
Cryptococcus albidus var. albidus ATCC® 10666™*	R4601811
Cryptococcus albidus var. albidus ATCC® 34140™*	R4601813
Cryptococcus humicolus ATCC® 9949™*	R4601101
Cryptococcus laurentii ATCC® 18803™*	R4601241
Cryptococcus laurentii ATCC® 66036™*	R4601711
Cryptococcus laurentii ATCC® 76483™*	R4601910
Cryptococcus neoformans ATCC® 14116™*	R4601812
Cryptococcus neoformans ATCC® 204092™*	R4608016
Cryptococcus neoformans ATCC® 32045™*	R4609327
Cryptococcus neoformans ATCC® 34877™*	R4601714
Cryptococcus neoformans ATCC® 56991™*	R4609466
Cryptococcus neoformans ATCC® 66031™*	R4601712
Cryptococcus neoformans ATCC® 76484™*	R4601912
Cryptococcus uniguttulatus ATCC® 66033™*	R4601713
Curtobacterium pusillum ATCC® 19096™*	R4609418
Curvularia sp. KM 8023	R4601705

배경색이 있는 제품들은 표준 제품들이며 배경색이 없는 제품들은 재고를 두지 않는 특별 제품임. 국가에 따라 판매 제한되는 제품이 있으며 판매 여부에 관해서는 지역 판매 업체에 문의 요망.

Organism	Order Code (5 loops)
E	
Edwardsiella tarda ATCC® 15947™*	R4601973
Eggerthella lenta ATCC® 43055™*	R4601951
Eikenella corrodens ATCC® 23834™*	R4601974
Eikenella corrodens ATCC® BAA-1152™*	R4601947
Elizabethkingia meningoseptica ATCC® 13253™*	R4602002
Enterobacter aerogenes ATCC® 13048™*	R4607080
Enterobacter aerogenes ATCC® 35028™*	R4607081
Enterobacter aerogenes ATCC® 35029™*	R4607082
Enterobacter aerogenes ATCC® 49701™*	R4601941
Enterobacter cloacae ATCC® 13047™*	R4607090
Enterobacter cloacae ATCC® 23355™*	R4607091
Enterobacter cloacae ATCC® 35030™*	R4601945
Enterobacter gergoviae ATCC® 33028™*	R4601940
Enterobacter hormaechei ATCC® 700323™*	R4607094
Enterococcus avium ATCC® 14025™*	R4607028
Enterococcus casseliflavus ATCC® 700327™*	R4607099
Enterococcus durans ATCC® 11576™*	R4601957
Enterococcus durans ATCC® 49479™*	R4601952
Enterococcus durans ATCC® 6056™*	R4607032
Enterococcus faecalis ATCC® 19433™*	R4601990
Enterococcus faecalis ATCC® 29212™*	R4607030
Enterococcus faecalis ATCC® 49149™*	R4607087
Enterococcus faecalis ATCC® 49452™*	R4601984
Enterococcus faecalis ATCC® 51299™*	R4601996
Enterococcus faecalis ATCC® 7080™*	R4606854
Enterococcus faecium ATCC® 35667™*	R4601956
Enterococcus faecium ATCC® 51559™*	R4609383
Enterococcus faecium ATCC® 700221™*	R4609432
Enterococcus gallinarum ATCC® 700425™*	R4601958
Enterococcus hirae ATCC® 49135™*	R4607086
Enterococcus raffinosus ATCC® 49464™*	R4601994
Enterococcus saccharolyticus ATCC® 43076™*	R4609393
Epidermophyton floccosum ATCC® 52066™*	R4601977
Erysipelothrix rhusiopathiae ATCC® 19414™*	R4601978
Escherichia coli ATCC® 10536™*	R4601968
Escherichia coli ATCC® 11229™*	R4601997
Escherichia coli ATCC® 11775™*	R4601989
Escherichia coli ATCC® 12014™*	R4609352
Escherichia coli ATCC® 13706™*	R4609469
Escherichia coli ATCC® 25922™*	R4607050
Escherichia coli ATCC® 29194™*	R4601986
Escherichia coli ATCC® 35218™*	R4601971
Escherichia coli ATCC® 35421™*	R4607084
Escherichia coli ATCC® 4157™*	R4607088
Escherichia coli ATCC® 51446™*	R4607097
Escherichia coli ATCC® 51755™*	R4601998
Escherichia coli ATCC® 8739™*	R4607085
Exiguobacterium aurantiacum ATCC® 49676™*	R4601900
Exophiala jeanselmei ATCC® 10224™*	R4601980
F	
Finegoldia magna ATCC® 29328™*	R4605002
Fluoribacter bozemanii ATCC® 33217™*	R4603951
Fluoribacter dumoffii ATCC® 33279™*	R4603952
Fonsecaea pedrosoli ATCC® 28174™*	R4601981
Fusobacterium mortiferum ATCC® 25557™*	R4609207
Fusobacterium mortiferum ATCC® 9817™*	R4602009
Fusobacterium necrophorum ATCC® 25286™*	R4609375
Fusobacterium nucleatum ATCC® 10953™*	R4602012
Fusobacterium nucleatum subsp. nucleatum ATCC® 25586™*	R4602010
Fusobacterium oxysporum ATCC® 48112™*	R4601983
G	
Gardnerella vaginalis ATCC® 14018™*	R4602050
Gardnerella vaginalis ATCC® 49145™*	R4602051
Gemella morbillorum ATCC® 27824™*	R4602100
Geobacillus stearothermophilus ATCC® 10149™*	R4601202
Geobacillus stearothermophilus ATCC® 12978™*	R4603011
Geobacillus stearothermophilus ATCC® 12980™*	R4601219
Geobacillus stearothermophilus ATCC® 7953™*	R4601218
Geotrichum candidum ATCC® 34614™*	R4603001
Geotrichum capitatum ATCC® 10663™*	R4606800
Geotrichum capitatum ATCC® 28576™*	R4606805
H	
Haemophilus aphrophilus ATCC® 19415™*	R4603002
Haemophilus haemoglobinophilus ATCC® 19416™*	R4603795
Haemophilus haemolyticus ATCC® 33390™*	R4603790
Haemophilus influenzae ATCC® 33930™*	R4603903
Haemophilus influenzae ATCC® 35056™*	R4603840
Haemophilus influenzae ATCC® 35540™*	R4609253
Haemophilus influenzae ATCC® 49144™*	R4603801
Haemophilus influenzae ATCC® 49247™*	R4603830
Haemophilus influenzae ATCC® 49766™*	R4603806

Organism	Order Code (5 loops)
I	
Issatchenkia orientalis ATCC® 6258™*	R4601520
K	
Klebsiella pneumoniae C6	R4603935
Klebsiella oxytoca ATCC® 13182™*	R4603012
Klebsiella oxytoca ATCC® 43086™*	R4603006
Klebsiella oxytoca ATCC® 49131™*	R4607019
Klebsiella oxytoca ATCC® 700324™*	R4603912
Klebsiella oxytoca ATCC® 8724™*	R4603009
Klebsiella pneumoniae subsp. pneumoniae ATCC® 10031™*	R4603930
Klebsiella pneumoniae subsp. pneumoniae ATCC® 13882™*	R4607022
Klebsiella pneumoniae subsp. pneumoniae ATCC® 13883™*	R4607037
Klebsiella pneumoniae subsp. pneumoniae ATCC® 27736™*	R4607031
Klebsiella pneumoniae subsp. pneumoniae ATCC® 33495™*	R4607021
Klebsiella pneumoniae subsp. pneumoniae ATCC® 35657™*	R4603922
Klebsiella pneumoniae subsp. pneumoniae ATCC® 700603™*	R4603074
Klebsiella pneumoniae subsp. pneumoniae ATCC® 9997™*	R4603915
Klebsiella pneumoniae subsp. pneumoniae ATCC® BAA 1705™*	R4609384
Klebsiella pneumoniae subsp. pneumoniae ATCC® BAA 1706™*	R4609385
Kloecera apiculata var. apis ATCC® 32857™*	R4600397
Kloecera japonica ATCC® 58370™*	R4609398
Kocuria kristinae ATCC® BAA-752™*	R4603441
Kocuria rhizophila ATCC® 533™*	R4604070
Kocuria rhizophila ATCC® 9341™*	R4604075
Kocuria rosea ATCC® 186™*	R4603440
L	
Lactobacillus acidophilus ATCC® 314™*	R4603050
Lactobacillus acidophilus ATCC® 4356™*	R4603007
Lactobacillus brevis ATCC® 8287™*	R4603053
Lactobacillus casei ATCC® 393™*	R4603008
Lactobacillus delbrueckii subsp. lactis ATCC® 12315™*	R4603100
Lactobacillus gasserii ATCC® 19992™*	R4603051
Lactobacillus paracasei subsp. paracasei ATCC® BAA-52™*	R4609378
Lactobacillus plantarum ATCC® 8014™*	R4603052
Leclercia adecarboxylata ATCC® 23216™*	R4603926
Leclercia adecarboxylata ATCC® 700325™*	R4603927
Legionella pneumophila ATCC 33823™*	R4603949
Legionella pneumophila ATCC® 33152™*	R4603950
Leuconostoc mesenteroides ATCC® 8293™*	R4603953
Listeria grayi ATCC® 25401™*	R4603959
Listeria innocua ATCC® 33090™*	R4609005
Listeria innocua VC 32293	R4603960
Listeria monocytogenes ATCC® 7644™*	R4603970
Listeria monocytogenes ATCC® 7646™*	R4609316
Listeria monocytogenes ATCC® BAA-751™*	R4603971
Lysinibacillus sphaericus ATCC® 4525™*	R4601229
M	
Malassezia furfur ATCC® 14521™*	R4605025
Malassezia furfur ST 8036	R4604023
Microbacterium liquefaciens ATCC® BAA-1819™*	R4609417
Microbacterium paroxydans ATCC® BAA-1818™*	R4609416
Microbacterium testaceum ATCC® 15829™*	R4604040
Micrococcus luteus ATCC® 10240™*	R4604071
Micrococcus luteus ATCC® 4698™*	R4604085
Micrococcus luteus ATCC® 49732™*	R4604080
Micrococcus lylae ATCC® 27566™*	R4604010
Micrococcus sp. ATCC® 700405™*	R4604086

배경색이 있는 제품들은 표준 제품들이며 배경색이 없는 제품들은 재고를 두지 않는 특별 제품임. 국가에 따라 판매 제한되는 제품이 있으며 판매 여부에 관해서는 지역 판매 업체에 문의 요망.

Organism	Order Code (5 loops)
Microsporum canis ATCC® 11621™*	R4604100
Moraxella catarrhalis ATCC® 23246™*	R4601236
Moraxella catarrhalis ATCC® 25238™*	R4601230
Moraxella catarrhalis ATCC® 25240™*	R4601231
Moraxella catarrhalis ATCC® 49143™*	R4601227
Moraxella catarrhalis ATCC® 8176™*	R4601228
Moraxella osloensis ATCC® 10973™*	R4604020
Moraxella osloensis ATCC® 19976™*	R4604028
Morganella morganii subsp. morganii ATCC® 25830™*	R4604029
Myroides odoratus ATCC® 4651™*	R4602003

N	
Neisseria gonorrhoeae ATCC® 19424™*	R4607041
Neisseria gonorrhoeae ATCC® 31426™*	R4607042
Neisseria gonorrhoeae ATCC® 35541™*	R4609235
Neisseria gonorrhoeae ATCC® 43069™*	R4607043
Neisseria gonorrhoeae ATCC® 43070™*	R4607044
Neisseria gonorrhoeae ATCC® 49226™*	R4609006
Neisseria gonorrhoeae ATCC® 49261™*	R4609019
Neisseria gonorrhoeae ATCC® 49981™*	R4607075
Neisseria lactamica ATCC® 23970™*	R4607045
Neisseria lactamica ATCC® 23971™*	R4607145
Neisseria lactamica ATCC® 49142™*	R4604027
Neisseria meningitidis serogroup C ATCC® 13102™*	R4609007
Neisseria meningitidis serogroup A ATCC® 13077™*	R4607048
Neisseria meningitidis serogroup B ATCC® 13090™*	R4607049
Neisseria meningitidis serogroup Y ATCC® 35561™*	R4607155
Neisseria mucosa ATCC® 19695™*	R4607150
Neisseria perflava ATCC® 14799™*	R4607046
Neisseria sicca ATCC® 29256™*	R4609217
Neisseria sicca ATCC® 9913™*	R4607047
Nocardia asteroides ATCC® 19247™*	R4604111
Nocardia asteroides CL 11014™*	R4609010
Nocardia brasiliensis ATCC® 19296™*	R4609011
Nocardia brasiliensis ATCC® 19297™*	R4604110
Nocardia farcinica ATCC® 3308™*	R4607156

O	
Ochrobactrum anthropi ATCC® 49187™*	R4604150
Ochrobactrum anthropi ATCC® 49687™*	R4604151
Ochrobactrum anthropi ATCC® BAA-749™*	R4604152
Oligella ureolytica ATCC® 43534™*	R4604175
Oligella urethralis ATCC® 17960™*	R4604022

P	
Paenibacillus gordonae ATCC® 29948™*	R4609381
Paenibacillus macerans ATCC® 8509™*	R4601237
Paenibacillus polymyxa ATCC® 43865™*	R4601234
Paenibacillus polymyxa ATCC® 7070™*	R4604600
Paenibacillus polymyxa ATCC® 842™*	R4601235
Parabacteroides distasonis ATCC® 8503™*	R4601226
Parabacteroides distasonis ATCC® BAA-1295™*	R4609377
Parvimonas microa ATCC® 33270™*	R4607203
Pasteurella aerogenes ATCC® 27883™*	R4607103
Pasteurella multocida subsp. multocida ATCC® 43137™*	R4607201
Pediococcus pentosaceus ATCC® 33314™*	R4609254
Penicillium chrysogenum ATCC® 10106™*	R4607202
Peptoniphilus asaccharolyticus ATCC® 29743™*	R4605001
Peptostreptococcus anaerobius ATCC® 27337™*	R4607051
Phialophora verrucosa ATCC® 28181™*	R4607204
Plesiomonas shigelloides ATCC® 14029™*	R4605035
Plesiomonas shigelloides ATCC® 51903™*	R4607218
Porphyromonas gingivalis ATCC® 33277™*	R4609008
Porphyromonas levii ATCC® 29147™*	R4601263
Prevotella melaninogenica ATCC® 25845™*	R4601255
Propionibacterium acidipropionici ATCC® 25562™*	R4607056
Propionibacterium acnes ATCC® 11827™*	R4607052
Propionibacterium acnes ATCC® 6919™*	R4607101
Proteus hauseri ATCC® 13315™*	R4607057
Proteus mirabilis ATCC® 12453™*	R4607059
Proteus mirabilis ATCC® 25933™*	R4607061
Proteus mirabilis ATCC® 29245™*	R4607054
Proteus mirabilis ATCC® 29906™*	R4605055

Organism	Order Code (5 loops)
Proteus mirabilis ATCC® 35659™*	R4607077
Proteus mirabilis ATCC® 43071™*	R4607073
Proteus mirabilis ATCC® 7002™*	R4607053
Proteus vulgaris ATCC® 49132™*	R4605151
Proteus vulgaris ATCC® 6380™*	R4607069
Proteus vulgaris ATCC® 8427™*	R4607058
Prototheca wickerhamii ATCC® 16529™*	R4608014
Providencia alcalifaciens ATCC® 51902™*	R4605169
Providencia stuartii ATCC® 33672™*	R4605170
Providencia stuartii ATCC® 49809™*	R4605171
Pseudomonas aeruginosa ATCC® 10145™*	R4607065
Pseudomonas aeruginosa ATCC® 15442™*	R4607210
Pseudomonas aeruginosa ATCC® 17934™*	R4609208
Pseudomonas aeruginosa ATCC® 27853™*	R4607060
Pseudomonas aeruginosa ATCC® 35032™*	R4607062
Pseudomonas aeruginosa ATCC® 35422™*	R4605200
Pseudomonas aeruginosa ATCC® 9027™*	R4605210
Pseudomonas aeruginosa ATCC® 9721™*	R4607068
Pseudomonas aeruginosa ATCC® BAA-1744™*	R4609392
Pseudomonas fluorescens ATCC® 13525™*	R4607216
Pseudomonas putida ATCC® 49128™*	R4607074
Pseudomonas stutzeri ATCC® 17588™*	R4607211

R	
Ralstonia pickettii ATCC® 49129™*	R4605209
Rhizopus stolonifer ATCC® 14037™*	R4607212
Rhodococcus equi ATCC® 6939™*	R4605400
Rhodotorula glutinis ATCC® 32765™*	R4607095

S	
Saccharomyces cerevisiae ATCC® 4098™*	R4606900
Saccharomyces cerevisiae ATCC® 9763™*	R4608201
Salmonella enterica serovar Typhimurium ATCC® 13311™*	R4606100
Salmonella enterica subsp. enterica serovar Anatol ATCC® 9270™*	R4606006
Salmonella enterica subsp. enterica serovar Choleraesuis ATCC® 10708™*	R4609001
Salmonella enterica subsp. enterica serovar Enteritidis ATCC® 13076™*	R4608200
Salmonella enterica subsp. enterica serovar Montevideo ATCC® 8387™*	R4606004
Salmonella enterica subsp. enterica serovar Newport ATCC® 6962™*	R4606005
Salmonella enterica subsp. enterica serovar Paratyphi A ATCC® 11511™*	R4606002
Salmonella enterica subsp. enterica serovar Paratyphi B ATCC® 8759™*	R4606003
Salmonella enterica subsp. enterica serovar Typhimurium ATCC® 14028™*	R4606000
Salmonella enterica sv Poona NCTC 4840	R4606009
Salmonella sp. not Typhi group D BF-SD	R4608202
Salmonella sp. serovar Abony NCTC 6017	R4606007
Salmonella tranoroa NCTC 10252	R4606010
Scopulariopsis acremonium ATCC® 58636™*	R4608204
Serratia liquefaciens ATCC® 27592™*	R4608000
Serratia marcescens ATCC® 13880™*	R4608002
Serratia marcescens ATCC® 14756™*	R4609004
Serratia marcescens ATCC® 8100™*	R4608001
Serratia odorifera ATCC® 33077™*	R4602000
Shewanella putrefaciens ATCC® 49138™*	R4601004
Shewanella putrefaciens ATCC® 8071™*	R4607071
Shigella sonnei group D ATCC® 11060™*	R4609255
Shigella sonnei group D ATCC® 25931™*	R4608150
Shigella sonnei group D ATCC® 9290™*	R4608151
Shigella boydii serovar 1 group C ATCC® 9207™*	R4608110
Shigella flexneri serovar 2b group B ATCC® 12022™*	R4608101
Sphingobacterium multivorum ATCC® 35656™*	R4602004
Sphingobacterium spiritivorum ATCC® 33861™*	R4602001
Sporidiobolus salmonicolor ATCC® MYA-4550™*	R4609396
Sporothrix schenckii ATCC® 10212™*	R4608205
Staphylococcus aureus ATCC® 29737™*	R4607026
Staphylococcus aureus ATCC® 35548™*	R4609446
Staphylococcus aureus ATCC® 9144™*	R4609321
Staphylococcus aureus ATCC® BAA-1026™*	R4601026
Staphylococcus aureus ATCC® BAA-1708™*	R4609389
Staphylococcus aureus subsp. aureus ATCC® 12600™*	R4606507
Staphylococcus aureus subsp. aureus ATCC® 25178™*	R4607015
Staphylococcus aureus subsp. aureus ATCC® 25904™*	R4607007
Staphylococcus aureus subsp. aureus ATCC® 33592™*	R4607020
Staphylococcus aureus subsp. aureus ATCC® 49444™*	R4609023
Staphylococcus aureus subsp. aureus ATCC® 49476™*	R4606510
Staphylococcus aureus subsp. aureus ATCC® 51153™*	R4606508

배경색이 있는 제품들은 표준 제품들이며 배경색이 없는 제품들은 재고를 두지 않는 특별 제품임. 국가에 따라 판매 제한되는 제품이 있으며 판매 여부에 관해서는 지역 판매 업체에 문의 요망.

Organism	Order Code (5 loops)
Staphylococcus aureus subsp. aureus ATCC® 6538P™*	R4609002
Staphylococcus aureus subsp. aureus ATCC® 6538™*	R4607016
Staphylococcus aureus subsp. aureus ATCC® BAA-976™*	R4606512
Staphylococcus aureus subsp. aureus ATCC® BAA-977™*	R4606513
Staphylococcus aureus subsp. aureus ATCC® 25923™*	R4607010
Staphylococcus aureus subsp. aureus ATCC® 29213™*	R4607011
Staphylococcus aureus subsp. aureus ATCC® 29247™*	R4607009
Staphylococcus aureus subsp. aureus ATCC® 33591™*	R4607003
Staphylococcus aureus subsp. aureus ATCC® 33862™*	R4607008
Staphylococcus aureus subsp. aureus ATCC® 43300™*	R4609022
Staphylococcus capitis subsp. capitis ATCC® 35661™*	R4608207
Staphylococcus epidermidis ATCC® 12228™*	R4606500
Staphylococcus epidermidis ATCC® 14990™*	R4606501
Staphylococcus epidermidis ATCC® 29887™*	R4608209
Staphylococcus epidermidis ATCC® 49134™*	R4607017
Staphylococcus epidermidis ATCC® 49461™*	R4608224
Staphylococcus epidermidis ATCC® 700296™*	R4609457
Staphylococcus haemolyticus ATCC® 29970™*	R4608210
Staphylococcus hominis ATCC® 27844™*	R4608211
Staphylococcus lentus ATCC® 700403™*	R4606511
Staphylococcus lugdunensis ATCC® 700328™*	R4608229
Staphylococcus saprophyticus ATCC® 15305™*	R4607014
Staphylococcus saprophyticus ATCC® 35552™*	R4608213
Staphylococcus saprophyticus ATCC® 43867™*	R4608223
Staphylococcus saprophyticus ATCC® 49453™*	R4608214
Staphylococcus saprophyticus ATCC® 49907™*	R4609020
Staphylococcus saprophyticus ATCC® BAA-750™*	R4607029
Staphylococcus sciuri subsp. sciuri ATCC® 29060™*	R4607012
Staphylococcus sciuri subsp. sciuri ATCC® 29061™*	R4608230
Staphylococcus simulans ATCC® 27851™*	R4607013
Staphylococcus xylosus ATCC® 29967™*	R4606504
Staphylococcus xylosus ATCC® 29971™*	R4606502
Staphylococcus xylosus ATCC® 35663™*	R4606505
Staphylococcus xylosus ATCC® 49148™*	R4607018
Staphylococcus xylosus ATCC® 700404™*	R4606506
Stenotrophomonas maltophilia ATCC® 13637™*	R4607067
Stenotrophomonas maltophilia ATCC® 17666™*	R4607072
Stenotrophomonas maltophilia ATCC® 49130™*	R4609009
Stenotrophomonas maltophilia ATCC® 51331™*	R4607064
Streptococcus agalactiae group B ATCC® 12386™*	R4607027
Streptococcus agalactiae group B ATCC® 13813™*	R4608250
Streptococcus agalactiae group B CL 810	R4607005
Streptococcus bovis ATCC® 33317™*	R4609454
Streptococcus criceti ATCC® 19642™*	R4606902
Streptococcus dysgalactiae subsp. equisimilis group G ATCC® 12394™*	R4608219
Streptococcus dysgalactiae subsp. equisimilis ATCC® 35666™*	R4608217
Streptococcus dysgalactiae subsp. equisimilis ATCC® 9542™*	R4608011
Streptococcus dysgalactiae subsp. equisimilis group C ATCC® 12388™*	R4607035
Streptococcus equi subsp. equi ATCC® 9528™*	R4601001
Streptococcus equi subsp. zooepidemicus ATCC® 43079™*	R4608237
Streptococcus equi subsp. zooepidemicus group C ATCC® 700400™*	R4608225
Streptococcus gallolyticus ATCC® 49147™*	R4607078
Streptococcus gallolyticus ATCC® 9809™*	R4607025
Streptococcus gallolyticus subsp. gallolyticus ATCC® 49475™*	R4608175
Streptococcus mutans ATCC® 25175™*	R4607001
Streptococcus mutans ATCC® 35668™*	R4607002
Streptococcus oralis ATCC® 35037™*	R4609461
Streptococcus oralis ATCC® 9811™*	R4608220
Streptococcus pasteurianus ATCC® 49133™*	R4607079
Streptococcus pneumoniae ATCC® 27336™*	R4607033
Streptococcus pneumoniae ATCC® 49136™*	R4607004
Streptococcus pneumoniae ATCC® 49150™*	R4606901
Streptococcus pneumoniae ATCC® 49619™*	R4609015
Streptococcus pneumoniae ATCC® 6301™*	R4606909
Streptococcus pneumoniae ATCC® 6303™*	R4608221
Streptococcus pneumoniae ATCC® 6305™*	R4607024
Streptococcus pneumoniae CL 811	R4606700

Organism	Order Code (5 loops)
Streptococcus pyogenes ATCC® 19615™*	R4607000
Streptococcus pyogenes group A ATCC® 12384™*	R4609242
Streptococcus pyogenes group A ATCC® 21547™*	R4609211
Streptococcus salivarius serotype II ATCC® 13419™*	R4608222
Streptococcus sanguinis Type 1 ATCC® 10556™*	R4607023
Streptococcus sp Gp D ATCC® 9854™*	R4606853
Streptococcus sp. group B ATCC® 12401™*	R4609453
Streptococcus sp. group D ATCC® 27284™*	R4607034
Streptococcus sp. Type 2 group F ATCC® 12392™*	R4608218
Streptococcus thermophilus ATCC® 19258™*	R4608238
Streptococcus uberis ATCC® 700407™*	R4608236
Streptococcus uberis ATCC® 9927™*	R4607036
Streptomyces albus ATCC® 17900™*	R4609024
Streptomyces griseus subsp. griseus ATCC® 10137™*	R4609013

T		
Tatlockia micdadei ATCC® 33204™*		R4609205
Trichophyton equinum ATCC® 12544™*		R4608302
Trichophyton mentagrophytes ATCC® 9533™*		R4608300
Trichophyton rubrum ATCC® 28188™*		R4608301
Trichophyton tonsurans ATCC® 28942™*		R4609014
Trichophyton verrucosum ATCC® 42898™*		R4608305
Trichosporon cutaneum ATCC® 28592™*		R4608303
Trichosporon mucoides ATCC® 204094™*		R4608015

V		
Veillonella parvula ATCC® 10790™*		R4609200
Veillonella parvula ATCC® 17745™*		R4609462
Vibrio parahaemolyticus ATCC® 17802™*		R4609000
Vibrio vulnificus ATCC® 27562™*		R4609017
Virgibacillus pantothenticus ATCC® 14576™*		R4609025

Y		
Yarrowia lipolytica ATCC® 9773™*		R4609003
Yersinia enterocolitica ATCC® 23715™*		R4607076
Yersinia enterocolitica subsp. enterocolitica ATCC® 9610™*		R4609018
Yersinia kristensenii ATCC® 33639™*		R4609021

Z		
Zygosaccharomyces bailii ATCC® MYA-4549™*		R4609397



배경색이 있는 제품들은 표준 제품들이며 배경색이 없는 제품들은 재고를 두지 않는 특별 제품임. 국가에 따라 판매 제한되는 제품이 있으며 판매 여부에 관해서는 지역 판매 업체에 문의 요망.

Quality Control Organism Sets, qualitative

Thermo Scientific™ RapID™ QC sets and Thermo Scientific™ MicroScan™ sets contain five loops of each of the listed organisms. Sensititre sets contain one loop of each of the listed organisms.

Set	Order Code
MicroScan Gram-Negative QC Set/4	
Enterococcus faecalis ATCC® 29212™*	R4661000
Klebsiella oxytoca ATCC® 49131™*	
Proteus vulgaris ATCC® 49132™*	
Pseudomonas aeruginosa ATCC® 22853™*	
MicroScan Gram-Positive QC Set/4	
Enterococcus faecalis ATCC® 29212™*	R4661001
Micrococcus luteus ATCC® 49732™*	
Staphylococcus aureus subsp. aureus ATCC® 29213™*	
Streptococcus gallolyticus ATCC® 49147™*	
RapID ANA II QC Set/3	
Bacteroides uniformis ATCC® 8492™*	R4653050
Clostridium sordellii ATCC® 9714™*	
Parabacteroides distans ATCC® 8503™*	
RapID CB PLUS QC Set/3	
Arcanobacterium pyogenes ATCC® 19411™*	R4653048
Corynebacterium pseudodiphtheriticum ATCC® 10701™*	
Paenibacillus polymyxa ATCC® 842™*	
RapID NH QC Set/4	
Haemophilus influenzae Type a ATCC® 9006™*	R4653051
Haemophilus paraphrophilus ATCC® 49146™*	
Moraxella catarrhalis ATCC® 8176™*	
Oligella urethralis ATCC® 17960™*	
RapID NF PLUS QC Set/4	
Acinetobacter baumannii ATCC® 19606™*	R4653054
Aeromonas hydrophila ATCC® 35654™*	
Elizabethkingia meningoseptica ATCC® 13253™*	
Oligella ureolytica ATCC® 43534™*	
RapID ONE QC Set/4	
Enterobacter aerogenes ATCC® 13048™*	R4653056
Escherichia coli ATCC® 25922™*	
Proteus vulgaris ATCC® 6380™*	
Pseudomonas aeruginosa ATCC® 27853™*	
RapID SS/u QC Set/5	
Enterococcus faecalis ATCC® 29212™*	R4653053
Escherichia coli ATCC® 25922™*	
Klebsiella pneumoniae subsp. pneumoniae ATCC® 13883™*	
Proteus mirabilis ATCC® 25933™*	
Serratia marcescens ATCC® 8100™*	
RapID STAPH PLUS QC Set/4	
Staphylococcus haemolyticus ATCC® 29970™*	R4653047
Staphylococcus saprophyticus ATCC® 35552™*	
Enterobacter aerogenes ATCC® 13048™*	
Oligella ureolytica ATCC® 43534™*	
RapID STR QC Set/4	
Enterococcus durans ATCC® 11576™*	R4653052
Enterococcus aecalis ATCC® 29212™*	
Streptococcus gallolyticus ATCC® 9809™*	
Streptococcus pyogenes ATCC® 19615™*	
RapID YEAST PLUS QC Set/5	
Candida albicans ATCC® 14053™*	R4653060
Candida glabrata ATCC® 2001™*	
Candida kefyr ATCC® 2512™*	
Cryptococcus laurentii ATCC® 66036™*	
Yarrowia lipolytica ATCC® 9773™*	
Sensititre Anaerobe MIC Susc QC Set/5	
Bacteroides fragilis ATCC® 25285™*	R4687021
Bacteroides thetaotaomicron ATCC® 29741™*	
Eggerthella lenta ATCC® 43055™*	
Sensititre AQUACULTURE MIC QC Set/2	
Aeromonas salmonicida subsp. salmonicida ATCC® 33658™*	R4687022
Escherichia coli ATCC® 25922™*	

Set	Order Code
Sensititre MIC Breakpoint QC Set/5	
Enterococcus faecalis ATCC® 29212™*	R4687020
Escherichia coli ATCC® 35218™*	
Escherichia coli ATCC® 25922™*	
Pseudomonas aeruginosa ATCC® 27853™*	
Staphylococcus aureus subsp. aureus ATCC® 29213™*	
Sensititre Automated Gram Neg QC Set/6	
Edwardsiella tarda ATCC® 15947™*	R4687023
Klebsiella oxytoca ATCC® 8724™*	
Morganella morganii subsp. morganii ATCC® 25830™*	
Proteus vulgaris ATCC® 6896™*	
Pseudomonas aeruginosa ATCC® 10145™*	
Shigella sonnei ATCC® 25931™*	
Sensititre GPID ID QC Set/5	
Enterococcus faecalis ATCC® 29212™*	R4687024
Escherichia coli ATCC® 25922™*	
Kocuria rosea ATCC® 186™*	
Pseudomonas aeruginosa ATCC® 27853™*	
Staphylococcus epidermidis ATCC® 700296™*	
Sensititre H.influ/S.pneu MIC QC Set/3	
Haemophilus influenzae ATCC® 49247™*	R4687025
Haemophilus influenzae ATCC® 49766™*	
Streptococcus pneumoniae ATCC® 49619™*	
Sensititre MIC Susceptibility QC Set/9	
Enterococcus faecalis ATCC® 29212™*	R4687026
Enterococcus faecalis ATCC® 51299™*	
Escherichia coli ATCC® 35218™*	
Escherichia coli ATCC® 25922™*	
Klebsiella pneumoniae subsp. pneumoniae ATCC® 700603™*	
Pseudomonas aeruginosa ATCC® 27853™*	
Staphylococcus aureus subsp. aureus ATCC® 29213™*	
Staphylococcus aureus subsp. aureus ATCC® BAA-976™*	
Staphylococcus aureus subsp. aureus ATCC® BAA-977™*	
Sensititre YeastOne QC Set/2	
Candida parapsilosis ATCC® 22019™*	R4687027
Issatchenkia orientalis ATCC® 6258™*	
Vitek GNI+ QC Set/8	
Bordetella bronchiseptica ATCC® 10580™†	R4652014
Burkholderia cepacia ATCC® 25608™†	
Klebsiella pneumoniae subsp. pneumoniae ATCC® 13883™†	
Leclercia adecarboxylata ATCC® 23216™†	
Plesiomonas shigelloides ATCC® 51903™†	
Proteus mirabilis ATCC® 7002™†	
Providencia alcalifaciens ATCC® 51902™†	
Serratia liquefaciens ATCC® 27592™†	
Vitek* GPI QC Set/7	
Enterococcus durans ATCC® 6056™†	R4652010
Enterococcus faecalis ATCC® 29212™†	
Erysipelothrix rhusiopathiae ATCC® 19414™†	
Staphylococcus xylosus ATCC® 29971™†	
Streptococcus equi subsp. equi ATCC® 9528™†	
Streptococcus gallolyticus ATCC® 9809™†	
Streptococcus pyogenes ATCC® 19615™†	
Vitek GPS Susceptibility QC Set/4	
Enterococcus faecalis ATCC® 29212™†	R4652008
Enterococcus faecalis ATCC® 51299™†	
Escherichia coli ATCC® 35218™†	
Staphylococcus aureus subsp. aureus ATCC® 29213™†	
Vitek NHI QC Set/6	
Aggregatibacter aphrophilus ATCC® 7901™†	R4652006
Haemophilus influenzae Type a ATCC® 9006™†	
Moraxella catarrhalis ATCC® 25238™†	
Neisseria gonorrhoeae ATCC® 49981™†	
Neisseria lactamica ATCC® 23970™†	
Neisseria meningitidis serogroup C ATCC® 13102™†	

Set	Order Code
Vitek Urine ID Card (UID and UID-3) QC Set/5	
Enterococcus faecalis ATCC® 29212™† Escherichia coli ATCC® 25922™† Klebsiella pneumoniae subsp. pneumoniae ATCC® 27736™† Proteus mirabilis ATCC® 7002™† Pseudomonas aeruginosa ATCC® 27853™†	R4652013
Vitek 2 AST-GN QC Set/4	
Escherichia coli ATCC® 25922™† Escherichia coli ATCC® 35218™† Klebsiella pneumoniae subsp. pneumoniae ATCC® 700603™† Pseudomonas aeruginosa ATCC® 27853™†	R4652018
Vitek 2 AST-GP QC Set/7	
Enterococcus faecalis ATCC® 29212™† Enterococcus faecalis ATCC® 51299™† Staphylococcus aureus subsp. aureus ATCC® 29213™† Staphylococcus aureus subsp. aureus ATCC® BAA-976™† Staphylococcus aureus subsp. aureus ATCC® BAA-977™† Staphylococcus aureus subsp. aureus ATCC® BAA-1026™† Streptococcus pneumoniae ATCC® 49619™†	R4652019
Vitek* 2 BCL 21345 QC Set/12	
Aneurinibacillus aneurinilyticus ATCC® 11376™† Bacillus badii ATCC® 14574™† Bacillus circulans ATCC® 61™† Bacillus megaterium ATCC® 14581™† Bacillus pumilus ATCC® BAA-1434™† Brevibacillus agri ATCC® 51663™† Brevibacillus laterosporus ATCC® 64™† Enterobacter aerogenes ATCC® 13048™† Paenibacillus gordonae ATCC® 29948™† Paenibacillus macerans ATCC® 8509™† Paenibacillus polymyxa ATCC® 7070™† Staphylococcus epidermidis ATCC® 12228™†	R4652023
Vitek 2 CBC Comprehensive QC Set/11	
Arcanobacterium haemolyticum ATCC® BAA-1784™† Cellulosimicrobium cellulans ATCC® BAA-1816™† Cellulosimicrobium cellulans ATCC® BAA-1817™† Corynebacterium renale ATCC® BAA-1785™† Corynebacterium urealyticum ATCC® 43044™† Curtobacterium pusillum ATCC® 19096™† Klebsiella oxytoca ATCC® 700324™† Microbacterium liquefaciens ATCC® BAA-1819™† Microbacterium paraoxydans ATCC® BAA-1818™† Microbacterium testaceum ATCC® 15829™† Ochrobactrum anthropi ATCC® BAA-749™†	R4652031
Vitek 2 GN 21341 QC Set/10	
Acinetobacter baumannii ATCC® BAA-747™† Elizabethkingia meningoseptica ATCC® 13253™† Enterobacter hormaechei ATCC® 700323™† Klebsiella oxytoca ATCC® 700324™† Ochrobactrum anthropi ATCC® BAA-749™† Proteus vulgaris ATCC® 6380™† Pseudomonas aeruginosa ATCC® 9721™† Pseudomonas aeruginosa ATCC® BAA-1744™† Shigella sonnei group D ATCC® 25931™† Stenotrophomonas maltophilia ATCC® 17666™†	R4652021
Vitek 2 GP 21342 QC Set/9	
Enterococcus casseliflavus ATCC® 700327™† Enterococcus saccharolyticus ATCC® 43076™† Kocuria kristinae ATCC® BAA-752™† Listeria monocytogenes ATCC® BAA-751™† Staphylococcus saprophyticus ATCC® BAA-750™† Staphylococcus sciuri subsp. sciuri ATCC® 29061™† Streptococcus equi subsp. zooepidemicus ATCC® 43079™† Streptococcus pneumoniae ATCC® 49619™† Streptococcus thermophilus ATCC® 19258™†	R4652020
Vitek 2 NH 21346 QC Set/9	
Aggregatibacter aphrophilus ATCC® 33389™† Eikenella corrodens ATCC® BAA-1152™† Enterobacter aerogenes ATCC® 13048™† Haemophilus influenzae ATCC® 9007™† Neisseria gonorrhoeae ATCC® 19424™† Neisseria lactamica ATCC® 23970™† Oligella urethralis ATCC® 17960™† Paenibacillus polymyxa ATCC® 7070™† Staphylococcus epidermidis ATCC® 12228™†	R4652024

Set	Order Code
Vitek 2 YST 21343 QC Set/11	
Candida albicans ATCC® 33389™† Candida glabrata ATCC® MYA-2950™† Candida lusitanae ATCC® 34499™† Candida utilis ATCC® 9950™† Kloeckera japonica ATCC® 58370™† Oligella ureolytica ATCC® 43534™† Prototheca wickerhamii ATCC® 16529™† Sporidiobolus salmonicolor ATCC® MYA-4550™† Staphylococcus epidermidis ATCC® 12228™† Trichosporon mucoides ATCC® 204094™† Zygosaccharomyces bailii ATCC® MYA-4549™†	R4652022



Quality Control Organism, quantitative

Each pack contains ten vials. Each kit is designed to deliver <100 CFU/0.1mL. Total diluent volume per vial is 1.1mL. Thermo Scientific™ Quanti-Cult™ Plus should be stored at 2–8°C. Blue foam rack and extra diluents available separately.

Organism	Order Code
Aspergillus brasiliensis ATCC® 16404™*	R4711100
Bacillus subtilis ATCC® 6633™*	R4711221
Brevundimonas diminuta ATCC® 19146™*	R4711300
Burkholderia cepacia ATCC® 25416™*	R4715220
Candida albicans ATCC® 10231™*	R4711503
Candida albicans ATCC® 2091™*	R4711601
Clostridium sporogenes ATCC® 11437™*	R4711703
Clostridium sporogenes ATCC® 19404™*	R4711700
Enterococcus faecalis ATCC® 29212™*	R4717030
Enterococcus faecium ATCC® 35667™*	R4711956
Escherichia coli ATCC® 25922™*	R4717050
Escherichia coli ATCC® 8739™*	R4717085
Kocuria rhizophila ATCC® 9341™*	R4714075
Pseudomonas aeruginosa ATCC® 9027™*	R4715210
Salmonella enterica subsp. enterica serovar Choleraesuis ATCC® 10708™*	R4719001
Salmonella enterica subsp. enterica serovar Typhimurium ATCC® 13311™*	R4716100
Salmonella enterica subsp. enterica serovar Typhimurium ATCC® 14028™*	R4716000
Salmonella sp. serovar Abony NCTC 6017	R4716007
Serratia marcescens ATCC® 8100™*	R4718001
Shigella sonnei ATCC® 25931™*	R4716300
Staphylococcus aureus subsp. aureus ATCC® 29737™*	R4717020
Staphylococcus aureus subsp. aureus ATCC® 6538P™*	R4719002
Staphylococcus aureus subsp. aureus ATCC® 6538™*	R4717016
Staphylococcus epidermidis ATCC® 12228™*	R4716500
Streptococcus pyogenes ATCC® 19615™*	R4717000

배경색이 있는 제품들은 표준 제품들이며 배경색이 없는 제품들은 재고를 두지 않는 특별 제품임. 국가에 따라 판매 제한되는 제품이 있으며 판매 여부에 관해서는 지역 판매 업체에 문의 요망.

Quality Control Organism Sets, quantitative

Quanti-Cult Plus sets contain two vials of each of the listed organisms.

Set	Order Code
Growth Promotion Testing QC Set/5	R4721000
Aspergillus brasiliensis ATCC® 16404™*	
Bacillus subtilis ATCC® 6633™*	
Candida albicans ATCC® 10231™*	
Clostridium sporogenes ATCC® 11437™*	
Pseudomonas aeruginosa ATCC® 9027™*	
Growth Promotion 2 QC Set/5	R4721001
Aspergillus brasiliensis ATCC® 16404™*	
Bacillus subtilis ATCC® 6633™*	
Candida albicans ATCC® 10231™*	
Pseudomonas aeruginosa ATCC® 9027™*	
Staphylococcus aureus subsp. aureus ATCC® 6538™*	
Nutritional Adequacy Testing QC Set/6	R4723000
Aspergillus brasiliensis ATCC® 16404™*	
Bacillus subtilis ATCC® 6633™*	
Candida albicans ATCC® 10231™*	
Escherichia coli ATCC® 8739™*	
Pseudomonas aeruginosa ATCC® 9027™*	
Staphylococcus aureus subsp. aureus ATCC® 6538™*	

Water Quality Control Organism and Sets

Water/Wastewater quality control testing microorganisms in Quanti-Cult format. WaterBugs deliver <50 CFU in a single inoculum to mimic water samples. One test/reconstituted vial.

Set	Order Code
Water QC Kit 1002 SET/3	
Contents: 9 WaterBugs (3 per organism); 9 rehydration vials.	R4741002
Enterobacter cloacae subsp. cloacae ATCC® 13047™*	
Escherichia coli Strain C1	
Proteus mirabilis ATCC® 12453™*	
Water QC Kit 1003 SET/2	
Contents: 10 WaterBugs (5 per organism); 10 rehydration vials.	R4741003
Escherichia coli Strain C1	
Pseudomonas aeruginosa ATCC® 27853™*	
Water QC Kit 1004 SET/2	
Contents: 10 WaterBugs (5 per organism); 10 rehydration vials.	R4741004
Enterobacter cloacae subsp. cloacae ATCC® 13047™*	
Escherichia coli Strain C1	
Water QC Kit 1009 SET/1	
Contents: 10 WaterBugs (10 per organism); 10 rehydration vials.	R4741009
Enterococcus faecalis ATCC® 29212™*	

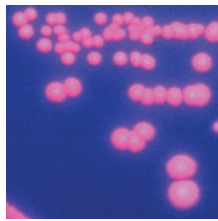
WaterBugs

Water/Wastewater quality control testing microorganisms in Quanti-Cult format. Thermo Scientific™ WaterBugs™ deliver <50 CFU in a single inoculum to mimic water samples. One test/reconstituted vial. Contents: ten preserved organism vials; ten rehydration vials.

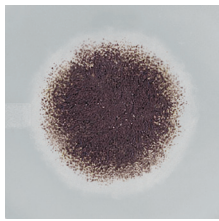
Set	Order Code
Enterobacter cloacae subsp. cloacae ATCC® 13047™*	R4757090
Escherichia coli Strain C1	R4751985
Klebsiella pneumoniae Strain C6	R4753935
Proteus mirabilis ATCC® 12453™*	R4757059
Pseudomonas aeruginosa ATCC® 27853™*	R4757060



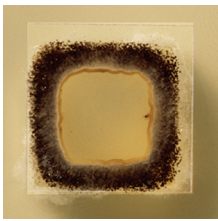
The ATCC Licensed Derivative® Emblem, the ATCC Licensed Derivative® word mark, and the ATCC catalog marks are trademarks of ATCC. Thermo Fisher Scientific Inc. is licensed to use these trademarks and to sell products derived from ATCC® cultures.



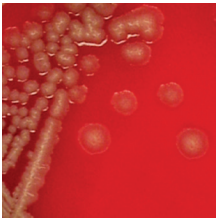
Aggregatibacter aphrophilus ATCC® 7901™[†] on Porphyrin Test Agar under UV light.



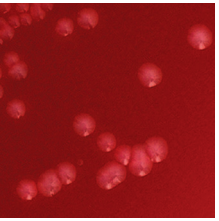
Aspergillus brasiliensis ATCC® 16404™[†] on Czapek Agar.



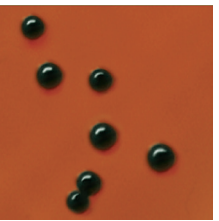
Aspergillus brasiliensis ATCC® 16404™[†] on Slide Culture Plate.



Bacillus subtilis ATCC 6633™[†] on Blood Agar.



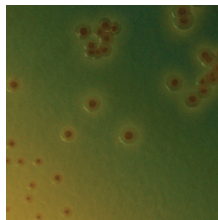
Bacteroides fragilis ATCC® 25285™[†] on Anaerobic Reducible Blood Agar.



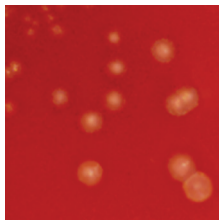
Bacteroides thetaiotaomicron ATCC® 29741™[†] on KBE Agar.



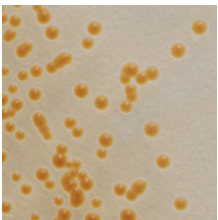
Bordetella pertussis ATCC® 12742™[†] on Jones Kendrick Transport Medium.



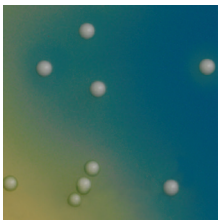
Burkholderia cepacia ATCC® 25416™[†] on OFPBL Medium.



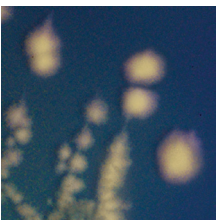
Campylobacter jejuni ATCC® 33291™[†] on CVA Medium.



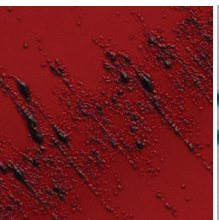
Candida albicans ATCC® 10231™[†] on BIGGY Agar.



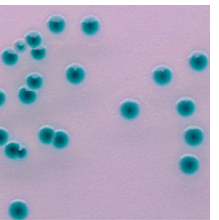
Candida albicans ATCC® 10231™[†] on Candida BCG Agar.



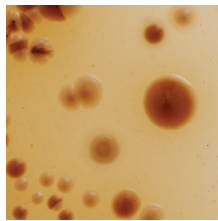
Clostridium difficile ATCC® 9689™[†] on CCFA Agar under ultraviolet light.



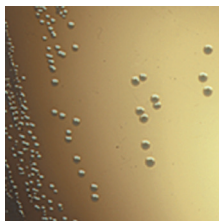
Corynebacterium diphtheriae ATCC® 13812™[†] on Cystine Tellurite Blood Agar.



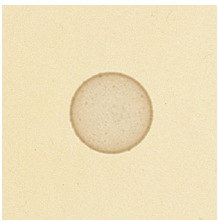
Cronobacter spp. on Cronobacter Sakazakii Isolation Agar.



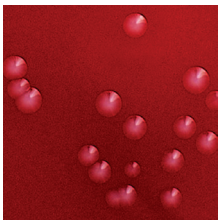
Cryptococcus neoformans ATCC® 14116™[†] on Birdseed Agar.



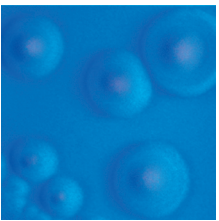
Enterococcus faecalis ATCC® 29212™[†] on BEA.



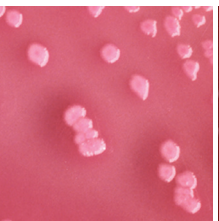
Enterococcus faecalis ATCC® 51299™[†] on BHI w/vancomycin.



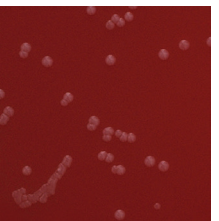
Enterococcus faecalis ATCC® 51299™[†] on Columbia CNA with Sheep Blood, Vancomycin.



Escherichia coli ATCC® 25922™[†] on MacConkey with Sorbitol, MUG under ultraviolet light.



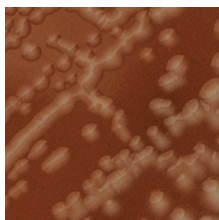
Escherichia coli ATCC® 25922™[†] on MacConkey.



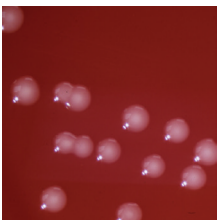
Gardnerella vaginalis ATCC® 14018™[†] on Chocolate Agar.



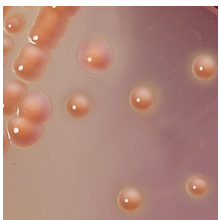
Haemophilus haemolyticus ATCC® 33930™[†] on Haemophilus Isolation Agar.



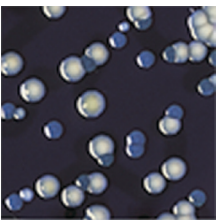
Haemophilus influenzae Type b ATCC® 10211™[†] on Chocolate Agar.



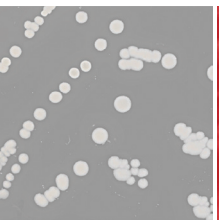
Haemophilus influenzae Type b ATCC® 10211™[†] on Blood Agar with GCHI Enrichment.



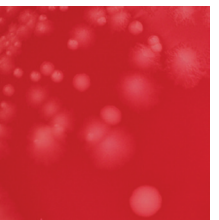
Klebsiella pneumoniae ATCC® 9997™[†] on MacConkey.



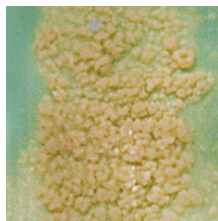
L. pneumophila ATCC® 33152™[†] (white) and *Tatlockia micdadei* ATCC® 33204™[†] (blue) on BCYE Differential Agar with BTB, BCP, PAV.



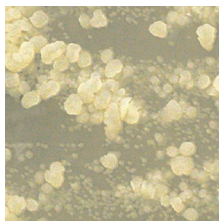
Listeria monocytogenes ATCC® 7644™[†] on LPM Agar.



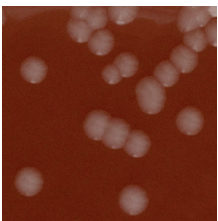
Listeria monocytogenes ATCC® 7644™[†] on Blood Agar (TSA with Sheep Blood).



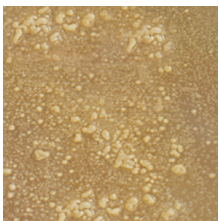
Mycobacterium tuberculosis ATCC® 25177™[†] on Lowenstein-Jensen Mycobactocel Agar.



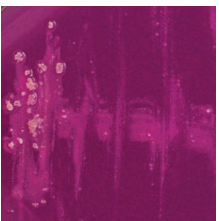
Mycobacterium tuberculosis ATCC® 25177™[†] on Mitchison 7H11 Selective Agar.



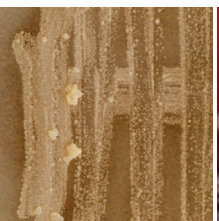
Neisseria gonorrhoeae ATCC® 43070™[†] on Chocolate Agar.



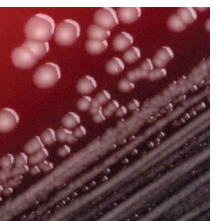
Nocardia asteroides CL 11014 on Sabouraud Dextrose Agar, Emmons with Chloramphenicol.



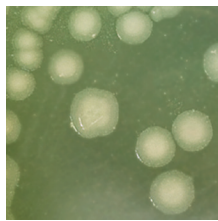
Nocardia brasiliensis ATCC® 19297™[†] with positive Urea on Nocardia Quad II.



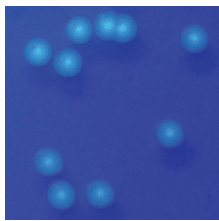
Nocardia brasiliensis ATCC® 19297™[†] with positive Tyrosine on Nocardia Quad.



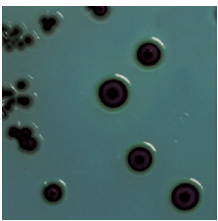
Pseudomonas aeruginosa ATCC® 9027™[†] on Blood Agar.



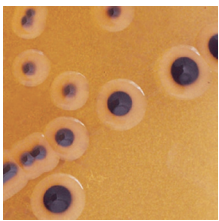
Pseudomonas aeruginosa ATCC® 27853™[†] on Cetrinide Agar.



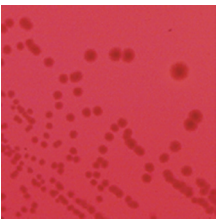
Pseudomonas fluorescens ATCC® 13525™[†] on Pseudomonas F Agar under UV light.



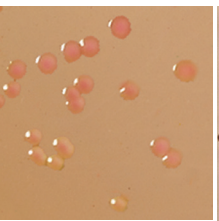
Salmonella enterica subsp. *enterica* serovar Typhimurium ATCC® 14028™[†] on HE Agar.



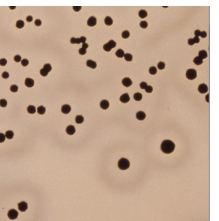
Salmonella enterica subsp. *enterica* serovar Typhimurium ATCC® 14028™[†] on SS Agar.



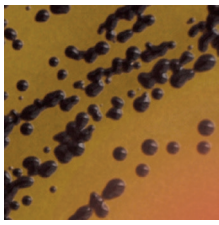
Shigella flexneri serovar 2b group B ATCC® 12022™[†] on XLD Agar.



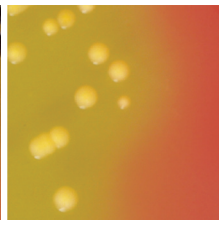
Shigella sonnei group D ATCC® 9290™[†] on SS Agar.



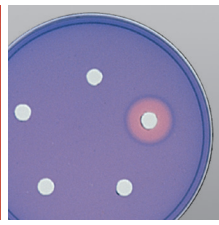
Staphylococcus aureus ATCC® 25923™[†] on Baird-Parker Agar.



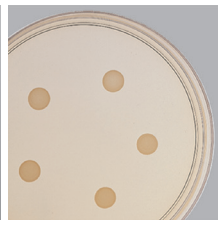
Staphylococcus aureus ATCC® 25923™1 on Vogel-Johnson Agar.



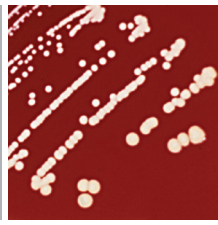
Staphylococcus aureus ATCC® 25923™1 on Mannitol Salt Agar.



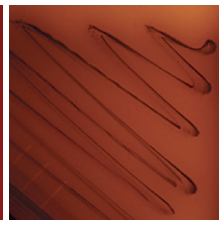
Staphylococcus aureus ATCC® 25923™1 on Thermonuclease Agar with Toulidine Blue.



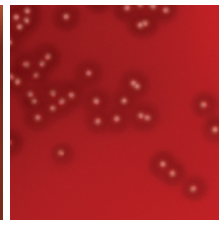
MR-*Staphylococcus aureus* ATCC® 43300™1 on Mueller Hinton Agar with NaCl, Oxacillin.



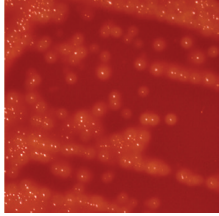
Staphylococcus saprophyticus ATCC® 15305™1 on Blood Agar.



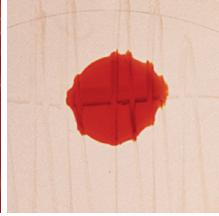
Streptococcus bovis ATCC® 35034™1 on Bile Esculin Agar in Strep ID Quad.



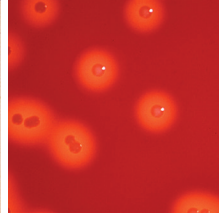
Streptococcus pneumoniae ATCC® 6305™1 on Blood Agar.



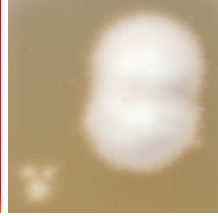
Streptococcus pyogenes ATCC® group A 19615™1 on SXT Blood Agar.



Streptococcus pyogenes ATCC® 19615™1 with positive PYR on Strep ID II Triplate.



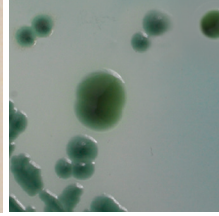
Streptococcus pyogenes ATCC® group A 12384™1 on Strep Isolation Agar.



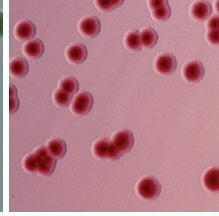
Trichophyton mentagrophytes ATCC® 9533™1 on Sabouraud Dextrose Agar, Emmons with Chloramphenicol.



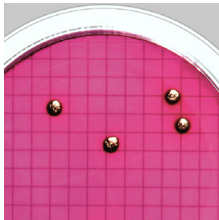
Trichophyton rubrum ATCC® 28188™1 on Potato Dextrose Agar.



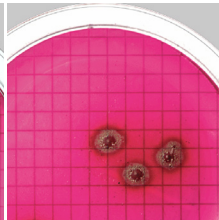
Vibrio parahaemolyticus ATCC® 17802™1 on TCBS Agar.



Yersinia enterocolitica subsp. *enterocolitica* ATCC® 9610™1 on Yersinia Selective Agar.



Escherichia coli Strain C1 on mENDO Agar, membrane filtration method.



Pseudomonas aeruginosa on mENDO Agar, membrane filtration method.



The ATCC Licensed Derivative® Emblem, the ATCC Licensed Derivative® word mark, and the ATCC catalog marks are the trademarks of ATCC. Thermo Scientific is licensed to use these trademarks and to sell products derived from ATCC® cultures.



ThermoFisher
SCIENTIFIC
The world leader
in serving science

Microbiology

thermo**scientific**



remel

applied**biosystems**

판매

수입/기술지원



전화 02-313-4541 | 팩스 02-313-4539

일반문의 info@mesdia.com

학술지원 techsupport@mesdia.com

웹 www.mesdia.com

07532 서울특별시 강서구 양천로 551-17 비즈메트로 1차 1101호